

From: ALLINSTRUCTORS <[REDACTED]> on behalf of Executive Vice
Chancellor Office <[REDACTED]>
Sent: Wednesday, August 12, 2020 2:28 PM
To: allinstructors@listserv.unl.edu
Subject: Academic Update – for Instructors – August 12

As we welcome students back to campus, here are three things instructors should be doing to finish preparations for the fall semester:

1. **Email** your students, if you haven't already, and let them know how you plan to deliver your courses this semester. Is everything in-person or all remote? For blended courses, let them know as soon as possible which days they are expected to be in the classroom.
2. **Finalize** your plans for the first week of remote asynchronous classes. Remember, no in-person and/or synchronous instruction can happen this week. The Center for Transformative Teaching has prepared [resources for the first week of remote classes](#) to help you prepare.
3. **Complete** the university's [2020 UNL Instructor Training](#), which was designed to supplement the university's COVID-19 Awareness – Campus Procedures & Self-Care training. [Here are some tips to help you access this web-based training module.](#)

Looking ahead, the [COVID-19: Nebraska Responds](#) website will continue to be updated and provide important information and support for faculty, staff, and students. An archive of these Academic Updates will remain posted on the [Instructors/Researchers](#) page in the blue box on the right.

Included in this email:

- What to Expect in Classrooms – new
- Classroom Technology Update – new
- When Students Forget Masks – new
- University Libraries Reopen August 17 – new
- Encouraging Academic Integrity – new
- Student Readiness Preparations – reminder

What to Expect in Classrooms

Classrooms are now set up for in-person instruction. The Classroom Prep team has removed furniture, placed decals indicating available seats, and posted signage with information on how furniture must be arranged to maintain physical distancing. Instructors are responsible for enforcing posted room capacities and should not allow chairs to be added or furniture to be rearranged, including turning desks to face each other.

Classroom Technology Update

General purpose classrooms are equipped with computers, document cameras and microphones so instructional content can be shared with remote students. There has been a shipping delay with the delivery of some classroom cameras, which allow remote students to see the classroom. ITS is doing everything possible to secure the equipment as quickly as possible. If necessary, instructors can use a built-in laptop camera or adjust the document camera to provide video until classroom cameras arrive. More information about these options will be posted on the [Learning and Emerging Technologies website](#).

Instructors should contact their department chair for information on college- and department- controlled spaces and available technology.

When Students Forget Masks

During the first three weeks of in-person instruction, as students get used to face coverings this semester, disposable masks will be available for those who forget to bring one to class during the first three weeks of in-person instruction. From August 24 to September 11, instructors can direct students to the following locations for a disposable mask at no cost:

- *City Campus* – a self-service wall dispenser in the hall by the west doors of the Nebraska Union
- *East Campus* – at the member services desk by the east doors of Campus Recreation
- *Innovation Campus* – at Food Innovation Center, 1901 N 21st Street, Room 232
- *Peter Kiewit Institute* – at the reception desk in Room 107

University Libraries Reopen August 17

[The Libraries will reopen](#) with limited hours during the first week of remote classes and expanded hours at the start of in-person classes on August 24. Students, faculty and staff will need their NCard to access most facilities. The Library Depository Retrieval Facility and Archives & Special Collections access will be by appointment only.

The HathiTrust Emergency Temporary Access Service will continue for the fall semester, which means no in-library use or stacks browsing will be allowed, although the stacks will be open for use as study space. [Digital requests for library materials](#), [research support](#), [teaching partnerships and collaborations](#), and [ASKus services](#) are all available online. [Visit the Libraries blog](#) for more information.

Encouraging Academic Integrity

The Executive Vice Chancellor's Office has published an [Encouraging Academic Integrity TipSheet](#) to help instructors promote honesty in the classroom. Topics covered include creating a classroom culture around integrity, reducing student stress to encourage honesty, and holding students accountable for their behavior. Additional TipSheets that may be helpful include [Academic Misconduct](#), [Student Mental Health and Resources](#), and [Faculty and Staff Resilience](#). It's especially important in these unusual times to make sure students [have the resources they need to succeed](#).

Student Readiness Preparations

The university has been working hard over the summer to prepare students for a successful in-person learning experience. Last week, Student Affairs announced [student training](#) that explains the risks associated with COVID-19 and how they can take proper safety precautions to help everyone on campus stay healthy. Everyone has been asked to make the [Cornhusker Commitment](#) — a promise to protect themselves, others and the Husker Community. Students will also receive [two reusable masks](#) — housing residents and students living in Greek houses will receive them as part of a health kit that includes a thermometer — and have been encouraged to regularly use the 1-Check COVID-19 Screening smartphone app.

From: Chancellor Green <chancellorgreen@UNL.EDU>
Sent: Thursday, July 23, 2020 3:49 PM
To: unlfacstaffstu [REDACTED]
Subject: Campus COVID-19 Update

[View this email in your browser](#)



Dear UNL faculty, staff and students -

First, thank you. I have been impressed, humbled and proud of how our UNL community has responded to the incredible challenges posed by the COVID-19 pandemic. The last six months have brought an unprecedented level of change as we moved all learning to a remote basis in the spring and as we've undertaken the comprehensive, detailed and interconnected planning necessary to safely returning to a level of in-person instruction in the fall. It has been, and continues to be, a herculean task — and our UNL community has delivered.

In a few weeks, we will welcome our students back to campus. I am confident — given the careful and thoughtful planning that has been done at all levels across campus — we can do so in a way that helps ensure the safety of our campus community, our visitors, and our greater community. This [video](#), featuring our students, speaks to our UNL campus experience and the measures being taken.

It is critically important that we work together to create an environment of **access, opportunity, innovation, and life-long experiential learning** for all students, faculty, staff, and visitors to campus. Our focus on maintaining human connection and a sense of community is what sets Nebraska apart, particularly within the Big Ten. Students come to UNL for the connections they make with their instructors and with one another.

We also recognize that a number of our students do not have the ability to access remote learning in safe and productive environments. By returning to campus we offer the most equitable opportunity for every UNL student to engage in learning and make progress toward their academic goals.

While we will plan for the ability to be flexible and adapt to the changing and evolving situation, we are putting in strong [protocols](#) to help ensure the health, safety, and well-being of the in-person experience for everyone in our campus community. These protocols are based on science and guidance from the CDC and the local health department. As part of this effort, each faculty, staff and student will receive two cloth face masks for use.

- For faculty and staff, these will be distributed to deans and vice chancellors in early August, and in a couple of weeks you can reach out to your unit leader or department chair for distribution within your group. Instructors may also request a face shield from their department chair.
- For students, distribution stations will be open on August 10. Pick up details will be forthcoming in a future communication.

To mitigate the risk of virus transfer within our buildings, our facilities team is increasing by nearly 50 percent the amount of fresh air being drawn into HVAC systems. They are also upgrading filters to more efficiently capture and reduce large and small particles in the air.

We know that much of our success lies in our common dedication to safety measures. All students will be asked to sign our [**Cornhusker Commitment**](#). We encourage all faculty and staff to voluntarily sign this as well and demonstrate your commitment to the safety of our campus community.

As we move into August and continue to plan for the fall semester, I wanted to update you on the greater opening of our campus and ongoing workplace guidance. We all know that COVID-19 infections can increase rapidly in a local area. Should it become necessary to further restrict access to campus, we will notify our UNL community and provide details of how we are doing so.

Workplace Guidance

In August, and until further notice, we will continue to encourage employees to work remotely when possible. As students return to campus and we begin the fall semester, we recognize that many more employees will need to return to an on-campus work environment either on a daily or somewhat regular basis. Where this is necessary, unit leaders are expected to follow the guidelines below. Any employee who is at risk for COVID-19, caring for someone at risk for COVID-19 or feels unsafe returning to campus can request an [**alternative work arrangement**](#).

- All [**safety protocols**](#) must be adhered to on campus and in university worksites.
- Through the encouragement of working remotely, flexible scheduling, and other flexible measures, we expect unit leaders to continue to keep the density of individuals in a workplace to the minimum necessary.
- University employees with minor children who are required to engage in remote learning due to the COVID-19 policies of the school district in which they are enrolled may request to work remotely in accordance with the university's alternative worksite policy. Unit leaders should approve those requests to the fullest extent that operational needs will permit.
- Unit leaders must continue to abide by local health guidance. Updates can be found on the Lincoln/Lancaster County Department of Health [**website**](#). UNL employees or sites in other counties should consult their local health department web sites.

Campus Facilities

UNL students will move into university housing August 13-16. More information is available on this [website](#).

Starting August 10, campus buildings will be open and accessible as they normally would be during the academic year. All [campus safety measures](#), such as wearing face coverings and social distancing, must be followed. Mail delivery will return to campus sites on August 10. There are some exceptions to normal hours, procedures and services for the following facilities:

- **Campus Recreation** – Hours and services may vary. Visit their website for details at <https://crec.unl.edu/covid>.
- **University Libraries** – the Adele Hall Learning Commons is currently open to UNL cardholders from 8 a.m. to 8 p.m. Monday through Friday. Collections paging services is currently available with pickup in the Learning Commons. On August 2, the Dunkin' Donuts in the Learning Commons will open. Love Library will resume fall semester hours by August 17 and additional details can be found at <https://libraries.unl.edu/>
- **Law Library** – The Marvin & Virginia Schmid Law Library will reopen to the UNL community on August 17. Additional details will be available on this [website](#). Assistance remains available at lawref@unl.edu.
- **The University of Nebraska State Museum, Lied Center for Performing Arts, Sheldon Museum of Art, and International Quilt Museum** will begin reopening in August, additional details on hours and programming are available on their websites.

Faculty/Staff Travel

Starting August 1, university-sponsored international travel will continue to be prohibited until further notice. Domestic travel outside Nebraska is highly discouraged. However, for exceptional cases where university-sponsored domestic travel is absolutely necessary, two levels of authorization approval will be required prior to travel.

Testing/Contact Tracing

All students, faculty, and staff are encouraged to self-monitor for and report symptoms of COVID-19 by using the **1-Check COVID-19** screening app developed by the University of Nebraska Medical Center. **1-Check COVID-19**

enables individuals to privately answer a series of questions and assess their risk of having COVID-19. Then the app issues a “low risk,” “urgent risk” or “emergent risk” assessment and guides users toward possible next steps specific to their needs.

For symptomatic individuals or those who desire testing, we will be providing testing through a partnership with **TestNebraska and the University Health Center**. Additional testing will also be available when a high-risk population has been identified and testing will help to mitigate risks to the broader campus community. Through our partnership, a designated site for testing will be established on our UNL campus. Additional information, including hours available, will be provided prior to the start of classes.

Process when students, faculty, or staff test positive

In coordination with Lincoln-Lancaster County Health Department, processes are being developed for contact tracing, isolation, and eventual return to work. The health department has approved a process for isolation and quarantine for students who live on campus. Off campus students, faculty, and staff will isolate at their residence under health department monitoring.

Contact tracers will identify people who have been in close contact with a person testing positive and direct a 14-day quarantine period. As long as face masks are worn and the six-foot physical distancing is maintained, being in the same classroom as someone who tests positive does not constitute close contact. While instructors will not automatically be notified if a student tests positive, students will be encouraged to contact instructors regarding any assignments or classwork they might miss while in isolation. Employees who test positive are also encouraged to contact supervisors so that work assignments can be adjusted.

More detailed information on our safety measures and other policies can be found on our [COVID-19 website](#).

As we take the steps needed to safely return this fall, thank you for what you do to make a Nebraska education unlike any other. That is never more important than it is now.

A handwritten signature in black ink, appearing to read "Ronnie".

Ronnie D. Green, Ph.D.

Chancellor

A red rectangular banner with white text and a large letter 'N'. The text reads "IN OUR GRIT" on the left, a large "N" in the center, and "OUR GLORY." on the right.

IN OUR GRIT **N** ***OUR GLORY.***

From: Justin Chase Brown
Sent: Tuesday, August 4, 2020 5:17 PM
To: ASEM Husker Hub Staff; ASEM OSFA Staff
Subject: OSFA/HH Weekly Update 8.4.20
Attachments: Weekly Update 8.4.20.pdf

Hello all,

Weekly update attached. Thanks again for making the last 5 years so great – looking forward to continuing to serve and help students for the next 5 years and beyond!

Thank you all,
Justin

The Office of Scholarships & Financial provides the administrative functions to help students attain their higher education goals by keeping UNL financially accessible and affordable. OSFA is committed to accomplishing our mission through excellent service, stewardship, and advocacy to support the recruitment, enrollment, retention, and graduation of all UNL students. Faculty, staff, and other university partners work with OSFA to support students.

Husker Hub is Nebraska's one-stop for integrated customer services regarding scholarships, financial aid, registration, transcripts, and billing and can be reached at huskerhub@unl.edu or by phone at 402-472-2030.



Justin Chase Brown

*Director of Scholarships & Financial Aid
and Interim Director of Husker Hub*

University of Nebraska–Lincoln

(402) 472 3484 (phone) 402 472 9826 (fax)

www.financialaid.unl.edu

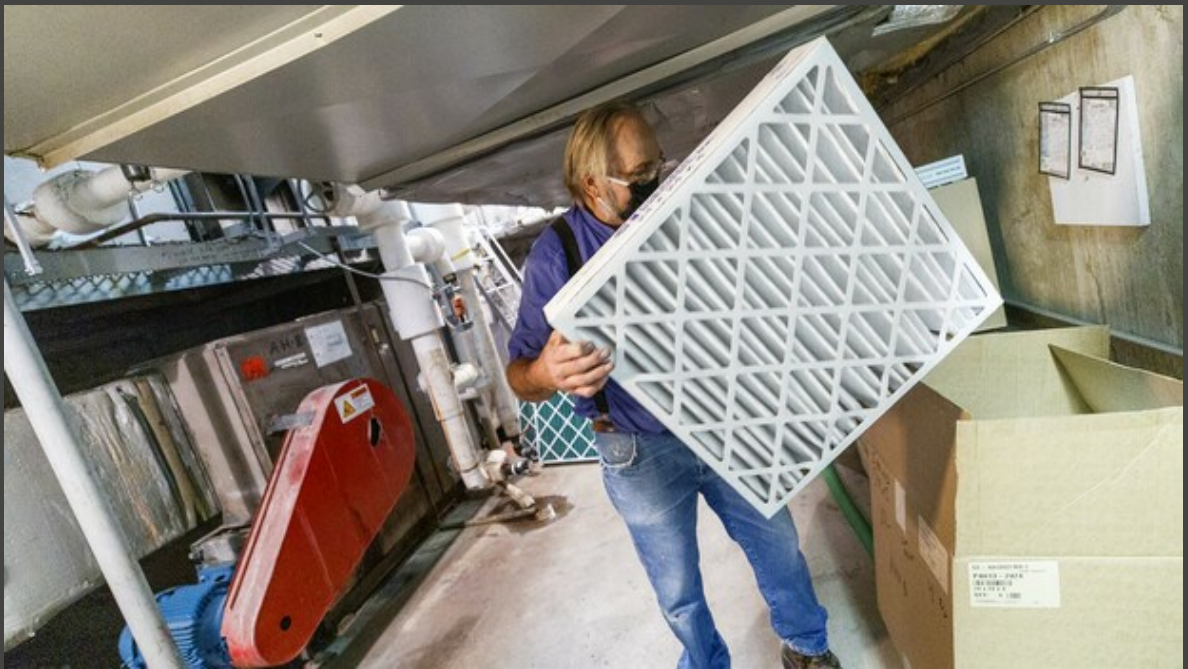
From: Nebraska Today <TODAY@LISTSERV.UNL.EDU> on behalf of Nebraska Today <today@UNL.EDU>
Sent: Friday, July 31, 2020 10:00 AM
To: today@listserv.unl.edu
Subject: Nebraska Today for Jul 31, 2020 | Increased air circulation, filtration part of fall semester prep

UNIVERSITY OF NEBRASKA-LINCOLN



July 31, 2020

IN OUR GRIT, OUR GLORY™



Increased air circulation, filtration part of fall semester prep

As the start of the fall semester approaches, facilities teams at the University of Nebraska–Lincoln are increasing fresh air circulation and improving filtration in buildings across campus.

University finalizes mask delivery plans for fall

semester

The University of Nebraska–Lincoln is preparing to deliver some 60,000 cloth masks to its students, instructors, researchers and staff.



New social media mental health effort features Nebraska connection

Susan M. Swearer, a University of Nebraska–Lincoln educational psychologist, licensed psychologist and nationally recognized anti-bullying expert, is consulting on a new social media initiative addressing pandemic-related mental health conditions.



Early adversity, neighborhoods have lasting impacts on children

A recent Nebraska study found that early childhood experiences — particularly adverse events and activities, and neighborhood disadvantages — can generate long-term behavioral and social impacts.



Hand sanitizer production pauses after 200K gallons

Hand sanitizer production on Nebraska Innovation Campus will cease July 31. This will be the final date for external entities to place or pick up any orders at NIC.



30 Huskers earn Gilman scholarship for education abroad

Thirty undergraduates have earned the Benjamin A. Gilman International Scholarship to support credit-bearing study abroad, internship abroad or virtual international opportunities in 2021.



Zoom-crashing co-workers earn home office honors for Wagner

Jen Wagner's favorite part of her home office space? Her cats — despite the occasional photo-bomb during Zoom meetings.





"I WEAR A MASK

around others because it's the least we can do to protect the vulnerable as we go about our daily lives."

— NICOLE BUAN
Associate Professor of Biochemistry



Handy hygiene | Photo of the Week

Maggie Ferguson, a May 2020 College of Business graduate, tests a hand-sanitizer station outside of Westbrook Music Building on July 28. Click through to learn more and see previous photos of the week.



[Morrill Hall to reopen to public Aug. 5](#)



[International Quilt Museum to reopen Aug. 4](#)



[Lied series features kid's program, dialects class, student performance](#)



Read more stories at Nebraska Today

[Submit Your News](#) | [Subscribe](#) | [Read this newsletter on the web](#)



© 2020 University of Nebraska-Lincoln | 1400 R Street | Lincoln, NE 68588 |
402-472-8515

This email produced and distributed by [University Communication](#)

From: Nebraska Today <TODAY@LISTSERV.UNL.EDU> on behalf of Nebraska Today <today@UNL.EDU>
Sent: Friday, August 7, 2020 10:00 AM
To: today@listserv.unl.edu
Subject: Nebraska Today for Aug 7, 2020 | Nebraska tops off classroom prep for return to on-campus instruction

UNIVERSITY OF NEBRASKA-LINCOLN



August 7, 2020

IN OUR GRIT, OUR GLORY™



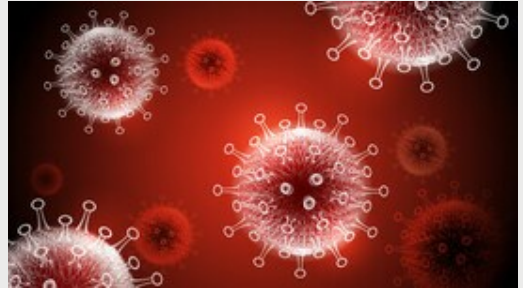
Nebraska tops off classroom prep for return to on-campus instruction

TECHNOLOGY UPGRADES, SEATING MARKERS AMONG FINAL PUSH TO FALL SEMESTER

After months of planning and preparation, the University of Nebraska–Lincoln has launched a weeklong effort to prepare more than 480 classrooms for students' return to campus.

University awards 20 grants supporting COVID-19 studies

Twenty University of Nebraska-Lincoln research teams have been selected for internal funding from the Office of Research and Economic Development's [COVID-19 Rapid Response Grant Program](#).



Yellow Robe joins university's anti-racism journey

Colette M. Yellow Robe, a member of the Northern Cheyenne Tribe and academic retention specialist with TRIO Programs, has joined the leadership group guiding the university's journey toward addressing anti-racism and racial equity.



Achievements | Honors, appointments, publications for Aug. 7

Learn more about recent honors, appointments and publications at the University of Nebraska–Lincoln in this week's achievements column.





Search for universal flu vaccine turns to tobacco plants

A plant typically thought of as a disease instigator may hold the key to hindering future influenza illness. University of Nebraska–Lincoln virologist Eric Weaver is leading a new project interrogating the tobacco mosaic virus as a possible catalyst for developing a universal flu vaccine.



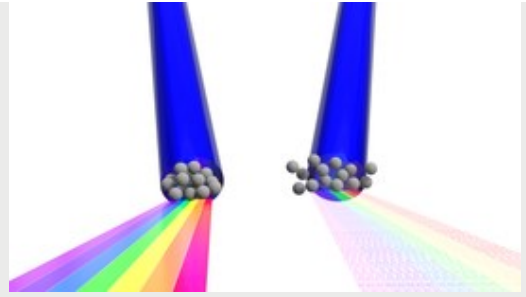
Weaver goes viral on flu, coronavirus for Faculty 101

In the latest episode, Mary Jane Bruce speaks with Eric Weaver about his efforts to develop a universal flu vaccine and the world's efforts to produce one for the novel coronavirus.



Physicist proposes way to record shutter speeds of molecule-glimpsing 'cameras'

Nebraska's Colton Fruhling and colleagues at the Extreme Light Laboratory may have found a way to precisely measure electron pulses lasting for mere attoseconds — a timeframe that compares to one second as one second compares to billions of years.



Shabby chic attic earns home office honors for Rhoads

An office tucked above and away from distractions has earned Husker Home Office of the Week honors for Trudy Rhoads.



On Campus



Study time | Photo of the Week

Herbie Husker joined Nebraska students for a little study time in the Adele Hall Learning Commons earlier this week. Click through to learn more about the university's transition to fall instruction and see previous photos of the

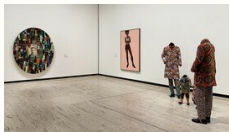
week.



[NU president's installation is Aug. 14](#)



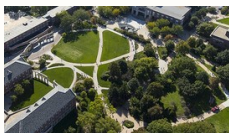
[Regular building access, package delivery returns](#)



[Sheldon Museum of Art to reopen Aug. 11](#)



[Dual approval needed for all critical domestic travel](#)



[Approval needed to host campus events with 50+ participants](#)



[Ross adds new films to streaming service](#)



[Conversation guides sought for Husker Dialogues](#)



[Read more stories at Nebraska Today](#)

402-472-8515

This email produced and distributed by [University Communication](#)

From: Nebraska Today <TODAY@LISTSERV.UNL.EDU> on behalf of Nebraska Today <today@UNL.EDU>
Sent: Tuesday, August 11, 2020 12:00 PM
To: today@listserv.unl.edu
Subject: Nebraska Today for Aug 11, 2020 | COVID-19 training available to students, instructors, staff

UNIVERSITY OF NEBRASKA-LINCOLN



August 11, 2020

IN OUR GRIT, OUR GLORY



COVID-19 training available to students, instructors, staff

VIDEOS FEATURE DETAILS NEEDED FOR RETURN TO ON-CAMPUS INSTRUCTION

University leaders are encouraging all members of the campus community to watch training videos that explain new COVID-19-related policies put into place this summer. Students, instructors, researchers and staff should complete the review before the fall semester begins on Aug. 17.

COVID-19 Digest: Nebraska U reopens

Welcome to the Nebraska Today COVID-19 Digest— a new feature intended to help you navigate campus during the global pandemic. Click through to learn more.



Gabel, Stage named Chancellor's Scholars

Two graduating seniors — Robert Gabel of Omaha and David Stage of Gretna — have been named Chancellor's Scholars. Both have maintained a 4.0 GPA through all collegiate work.





N

"I WEAR A MASK

for myself, my friends and my loved ones so that everyone of us will be safe, because prevention is better than needing to be cured. I am trying to prevent and take precautions as much as I can."

— **ESHA MISHRA**
Graduate Student in Physics

Wood inspires international HIV research leadership

For virologists around the globe, this has been a year of intense research to learn all there is to know about the novel coronavirus. For virologists like Nebraska's Charles Wood, whose career spans 40 years, the urgency of the work may feel familiar.



Summer math camp gets creative with online delivery

Transitioning the 24th annual All Girls/All Math high school summer camp to an online experience turned into a lesson in creative adaptation. Program coordinators knew they had to incorporate effective activities into the weeklong schedule, enabling the 15 participants to form close friendships.



On Campus



Survey shows modest expectations for Nebraska economy



University Libraries to reopen Aug.17



Nebraska Today returns to regular publication schedule Aug. 17



Ashfall Fossil Beds closing temporarily for construction



[Read more stories at Nebraska Today](#)

[Submit Your News](#) | [Subscribe](#) | [Read this newsletter on the web](#)

© 2020 University of Nebraska–Lincoln | 1400 R Street | Lincoln, NE 68588 | 402-472-8515

This email produced and distributed by [University Communication](#)

UNIVERSITY OF
Nebraska
Lincoln